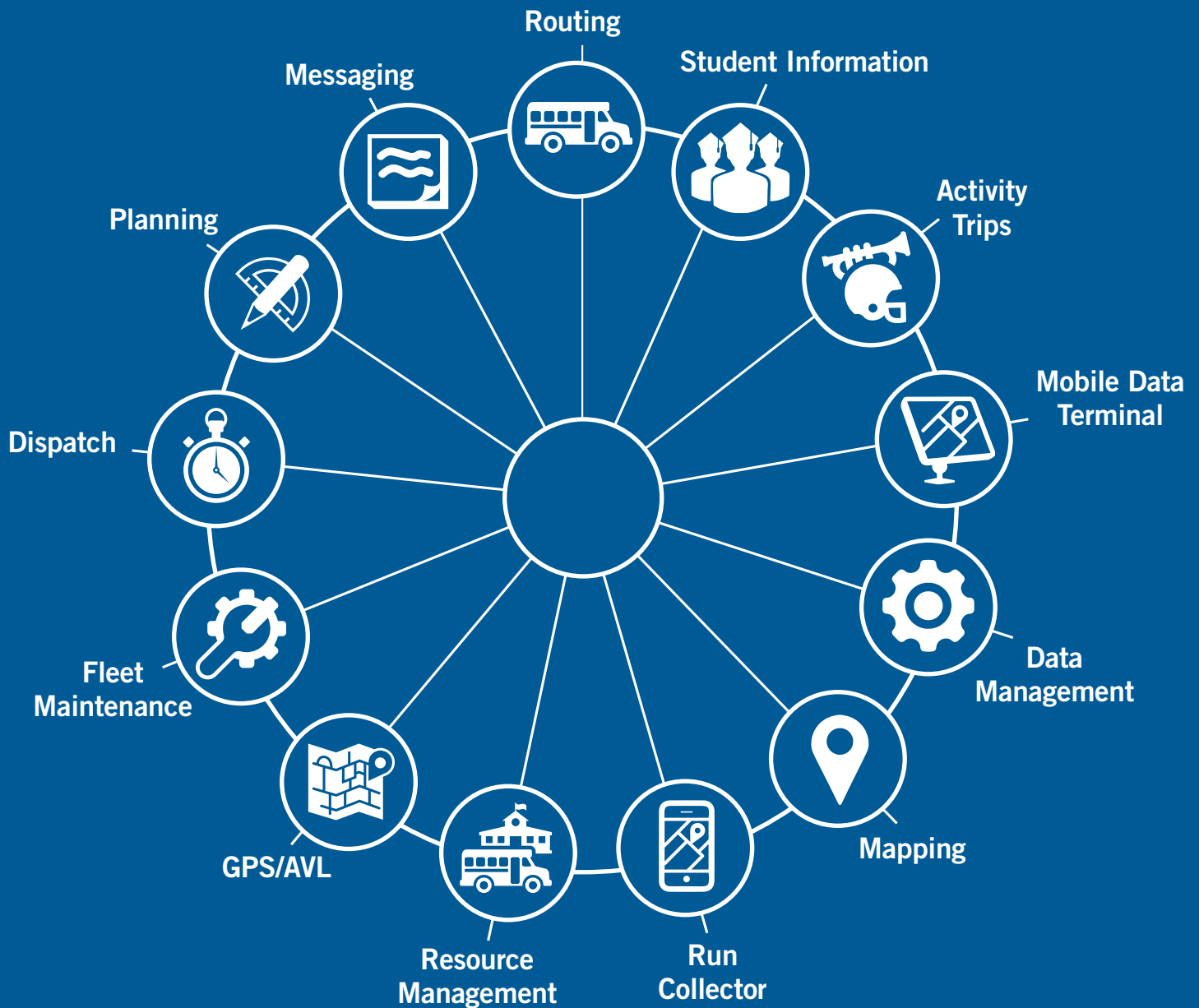


Student Transportation

Integrated software for modern transportation departments



STUDENT TRANSPORTATION: Connect Your Daily Transportation Operations



Your transportation department manages a complex network of operations every day. Tyler's Student Transportation solutions create connections between your data and processes to break down silos and help you keep your operations running smoothly.

Tyler Knows Transportation

Routing will always be at the core of your transportation operation, but your job involves so much more on a day-to-day basis. From fleet maintenance to activity trips, from vehicle tracking to parent communication, you see it all between when bus routes are prepared in the morning, to when reports are run at the end of the day.

Historically, each of these functions have existed in various programs and systems, making it difficult to see a complete picture of your operations and slowing down your workflows. With Tyler's Student Transportation software suite, all your transportation functions are integrated into one system to increase ease of use, efficiency, and to help you do more for the students you transport every day.

To understand the integrated solutions that connect the entire transportation process, follow the **Route to a Modernized Transportation Department** timeline on the next pages. See how our solutions empower your department from recruiting drivers to generating reports, and everything in between.





Route to a Modernized Transportation Department

Student Transportation empowers your district to plan, execute, and report on every process in your transportation operations.



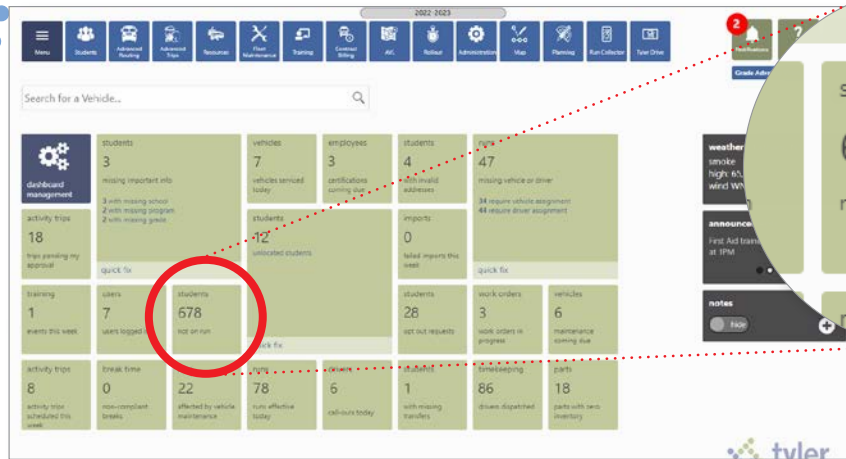
Customize Routing Rules to Ensure Safety Standards

Safety protocols vary not only between states, but also districts — and no one understands those requirements like you do. With Student Transportation, you determine the routing rules with data-supported routes to set geographical boundaries, travel speeds, traffic patterns, and other precautions to help ensure your fleet is following safety standards.



Intuitively Update Your Maps

As streets change and neighborhoods grow, you need to keep your maps up to date. With map editing in Student Transportation, you control your maps with flexible options and customization tools.

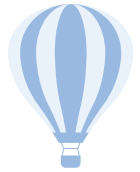


Easily Identify Students Unassigned to Runs

Mapping and routing changes for students, such as new enrollment or moving into a new house, may not reflect automatically in manual routing software. In Student Transportation, students not assigned to a route are highlighted on the routing screen. With the on-screen looping tool, you can quickly identify and assign students to appropriate and available runs based on geographic location, safety standards, and your customized routing rules.



Learn more about the Student Transportation integrated suite
tylertech.com/student-transportation

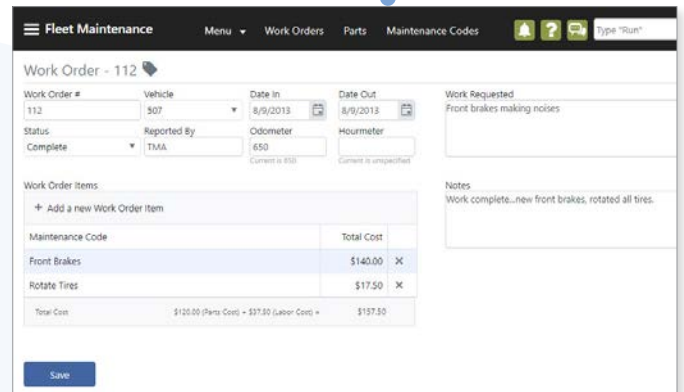


Integrate Activity Trip Management With Your Daily Operations

Many districts manage activity trips separately from their routine transportation, but managing these in different systems can double the work. With Tyler's Student Transportation, these functions are consolidated into one system to streamline activity trip assignments, reporting, and more.

Centralize Fleet Maintenance Monitoring

Vehicle maintenance requires 24/7 tracking to keep your operation running smoothly. With Student Transportation's paperless fleet maintenance features, you can track work orders, manage parts inventory, and log repair costs all in real time.



Import Stops and Optimize Runs to Increase Efficiency

Import addresses to easily add a stop without altering your existing routes. When new stops require adjusted routes, the "optimize run" feature on the routing screen automatically calculates the most efficient route to take.





LEARN MORE ABOUT
Tyler Drive

tylertech.com/tyler-drive



Confidently Assign Routes to Drivers of Any Experience Level

Tyler Drive on-board tablets are fully integrated with the Student Transportation software — an industry-first pairing that helps keep drivers and routers in sync. The tablet eliminates guesswork for the driver: it provides turn-by-turn directions following the exact assigned route, identifies students assigned to each stop, and can even reroute as needed while following safety protocols.



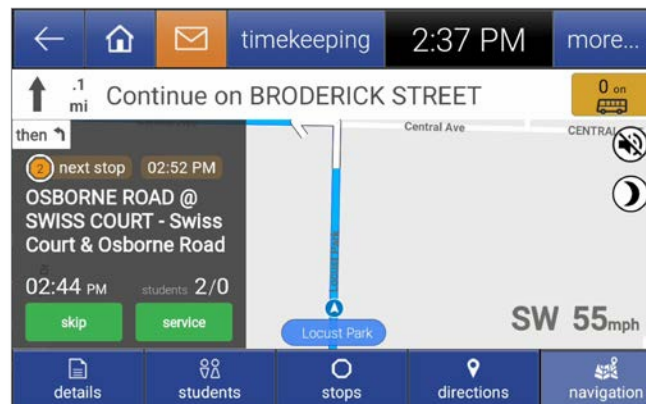
Leverage Technology to Recruit and Retain Drivers

Your transportation solutions can act as a recruitment tool for your applicants and contribute to long term job satisfaction for your drivers. When job seekers consider a career in student transportation, they can feel intimidated by the amount of crucial detail they would need to recall as they drive their assigned routes. With Tyler Drive, the information is at their fingertips, helping drivers of every experience level to stay focused on student safety throughout their run.



Reduce Driver Distraction with Trusted Tools

Tyler Drive has been developed in full cooperation with state and federal routing organizations, and today guides more than 20,000 school vehicles along their daily routes. Compared to paper route sheets, Tyler Drive can reduce the chance of distraction on the road: driver directions are available in both audio and visual format, and the motion lock feature can be enabled to black out the tablet screen when driving, further preventing distraction from the road.





Keep Reroutes on Course With GPS Tracking

You never know when a route change will be needed. Bus stops can change, road obstructions can unexpectedly appear, and the list goes on. Tyler Drive's integrated GPS tracking and telematic hardware safely reroutes your buses automatically in the event of a needed detour, helping to keep your route safe and on schedule.

Eliminate Manual, Paper-Based Bus Inspections

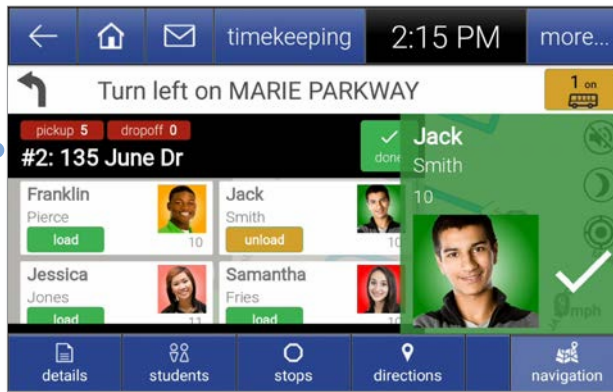
Both Tyler Drive and Tyler's Bus Inspect Mobile app allow staff to conduct paperless inspections on the go, eliminating the manual process of entering inspections into your system. Recurring inspection templates can be created to reduce redundant processes and data entry. Inspection data is automatically routed back to the Student Transportation software for reporting, ensuring needed maintenance is flagged without delay.



Provide Your Staff With Timekeeping at Their Fingertips

With the Bus Clock Mobile app or Tyler Drive tablets, employees no longer need to report to physical time clocks in the building every day. This leads to more accurate timekeeping, particularly for park-out arrangements.

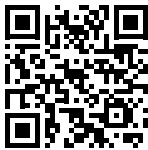




LEARN MORE ABOUT Student Ridership Management



tylertech.com/student-ridership



Ensure Students are on Correct Routes With Student Ridership

With scan card technology, drivers can confirm that students board the correct bus and get off at the right stop. When used with Tyler Drive, a student's card scan brings up their relevant transportation information right on the tablet. If your district has bus monitors or aides, they can use the Bus Attendance Mobile app to track ridership and review seat assignments directly from a mobile device. This at-a-glance information helps to ensure the boarding process is efficient.



LEARN MORE ABOUT THE My Ride K-12 app

tylertech.com/my-ride-k12



Prepare for Unplanned Routes with Dynamic Student Routing

Tyler Drive's Dynamic Student Routing feature automatically assigns unplanned rides to the necessary route. Confusion, delays, and extra fuel costs can be avoided when students board a bus and scan their card, as Dynamic Student Routing recalculates the existing route on-the-spot to add the new student's stop, without tampering with existing route data.



Make Parent Communication Easy With My Ride K-12

The My Ride K-12 app reduces parents' calls to the school for everyday updates by providing rapid communication from the transportation department. The app allows users to securely access relevant stop information including time and location. When integrated with Tyler's telematic solutions, the app can share real-time bus ETAs, reducing time spent waiting at the stop — and the app can show when and where students scanned on and off the bus, if scan cards are in use. With push notifications, the app can alert families affected by route changes, late vehicles, or other unexpected changes.

Automatically Generate Reports Built to Your Preferences

Route duration, student attendance, route quantity and quality, and vehicle inspections are among the many data points tracked within Student Transportation. This data is automatically logged and can easily be used to generate templated reports for everyday use or custom reports for more complex needs, eliminating repetitive manual reporting.



Accommodate Special Needs With Custom Fields and Reporting

Student needs can vary infinitely, but transportation managers can be more prepared to accommodate them with access to the right information. With customizable accommodation fields and the ability to specify vehicle capacities, you can help ensure requirements are met for special needs transportation.



Rollout	507 Latham, NY	Search...	tyler Student Transportation powered by Zenrow
Garage	Rollout for today 10/11/2022		
<input checked="" type="checkbox"/> Include activity logs	✓ Adams ES AM 10 Brown, Lester	5:21 AM 472	West Garage
rollout for today 156	✓ ES AM Run 3 Edwards, Farnell	5:41 AM 79	West Garage
needs attention 70	✓ City Honors AM 1 Biodori, Kosta	6:00 AM 13333	West Garage
current 106	✓ ES 11 Garcia, Marco	6:11 AM 116-08	West Garage
needs driver 69	✓ Connect AM Mester, Christy	6:13 AM 82	West Garage <small>Specialty Vehicle</small>
	✓ Adams ES - Morning Run Carbone, Francis	6:17 AM 79	West Garage
	✓ Smith HS AM 1 Simms, Juanita	6:19 AM 508	West Garage
	⌚ Smith High School AM 1 Brown, Mark	6:45 AM 92	West Garage



Dispatch On the Go With the Electronic Rollout Sheet

Empower your dispatchers with the tools they need to provide real-time vehicle statuses and up-to-date departure times. With the Electronic Rollout Sheet, as vehicles leave the yard dispatchers can monitor and update their statuses from a mobile device, ensuring important information can be captured on the go.



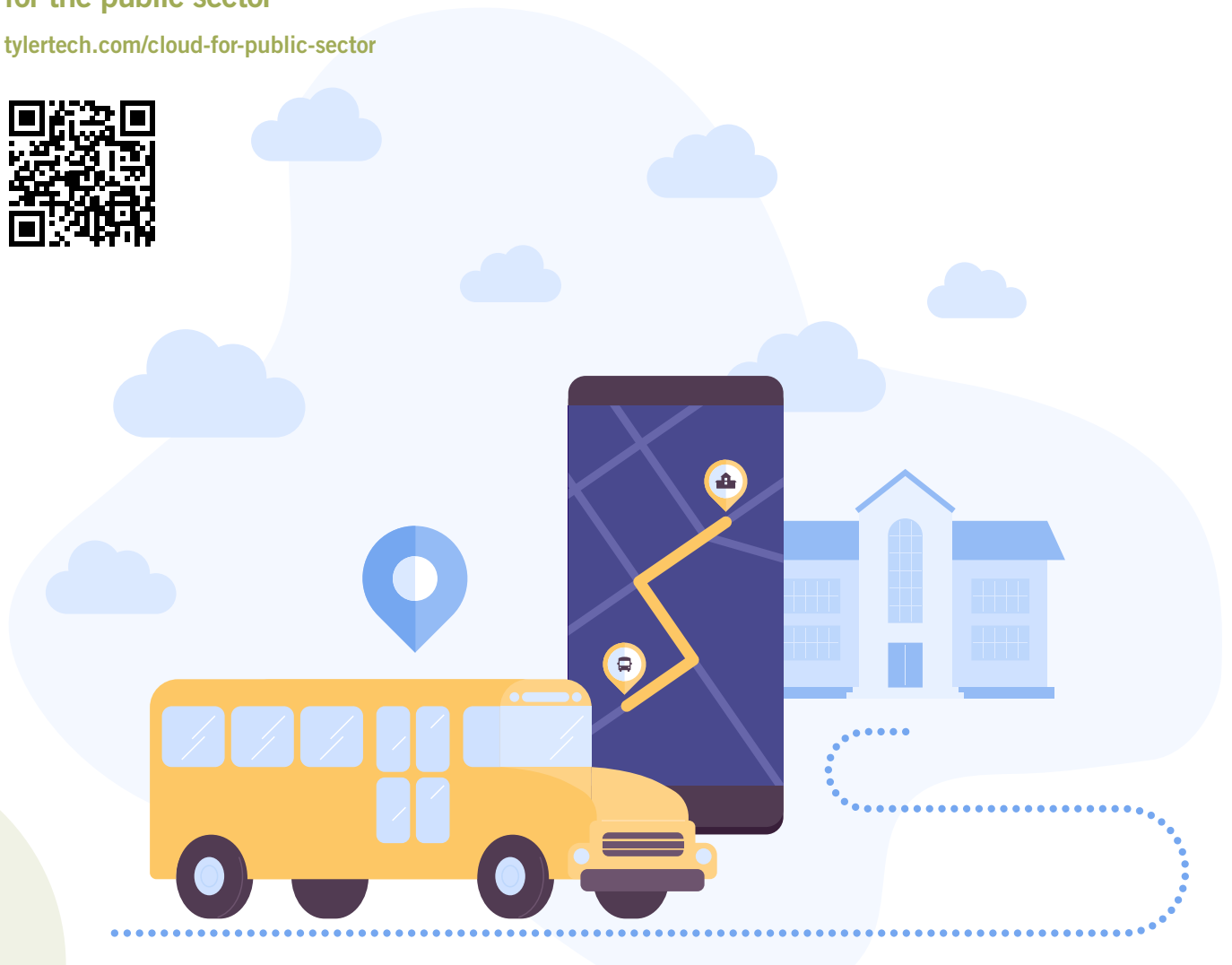
Untether Your Operations With Cloud Technology

The Student Transportation suite is a web-based solution, allowing seamless integrations and access to your software anywhere you have internet. This cloud-enabled solution is built on Amazon Web Services (AWS) and leverages AWS's expertise in secure cloud offerings to ensure your — and your students' — data is safe.



**Learn more about cloud technology
for the public sector**

tylertech.com/cloud-for-public-sector





Tyler Knows Schools

For decades, Tyler Technologies has been focused on delivering the best software to K-12 districts. More than 5,000 school districts use one or more Tyler school solutions, with over 2,000 using our routing solutions. We serve districts of all sizes; our clients range from schools of 250 students to multi-campus districts with 200,000 students. Student Transportation is a core component of Tyler Technologies' integrated school solution suite, which provides solutions for finance, human resources, data analytics, and more. With a complete Tyler software suite, districts see a significant reduction in staff hours spent performing redundant tasks in multiple systems, managing integrations with third-party systems, and reporting on district-wide data.

About Tyler Technologies, Inc.

Tyler Technologies (NYSE: TYL) provides integrated software and technology services to the public sector. Tyler's end-to-end solutions empower local, state, and federal government entities to operate efficiently and transparently with residents and each other. By connecting data and processes across disparate systems, Tyler's solutions transform how clients turn actionable insights into opportunities and solutions for their communities. Tyler has more than 40,000 successful installations across nearly 13,000 locations, with clients in all 50 states, Canada, the Caribbean, Australia, and other international locations. Tyler has been recognized numerous times for growth and innovation, including Government Technology's GovTech 100 list. More information about Tyler Technologies, an S&P 500 company headquartered in Plano, Texas, can be found at tylertech.com.

info@tylertech.com | tylertech.com



Empowering people who serve the public®