

Economic Intelligence *powered by Socrata®*

ACCELERATE COMMUNITY PROSPERITY WITH COMMERCIAL ECONOMIC DATA

LEADING ECONOMIC DATA

- Mobility
- Business revenue
- Consumer spending
- Real estate market

INSIGHTS ON DAY ONE

- Pre-configured indicators in an intuitive interface
- Fully automated data pipelines

CONNECT TO ENTERPRISE DATA PLATFORM

- Integrate with operational data
- Share insights across the enterprise
- Connect data to action with alerts

GAIN INSIGHTS WITH LEADING ECONOMIC DATA

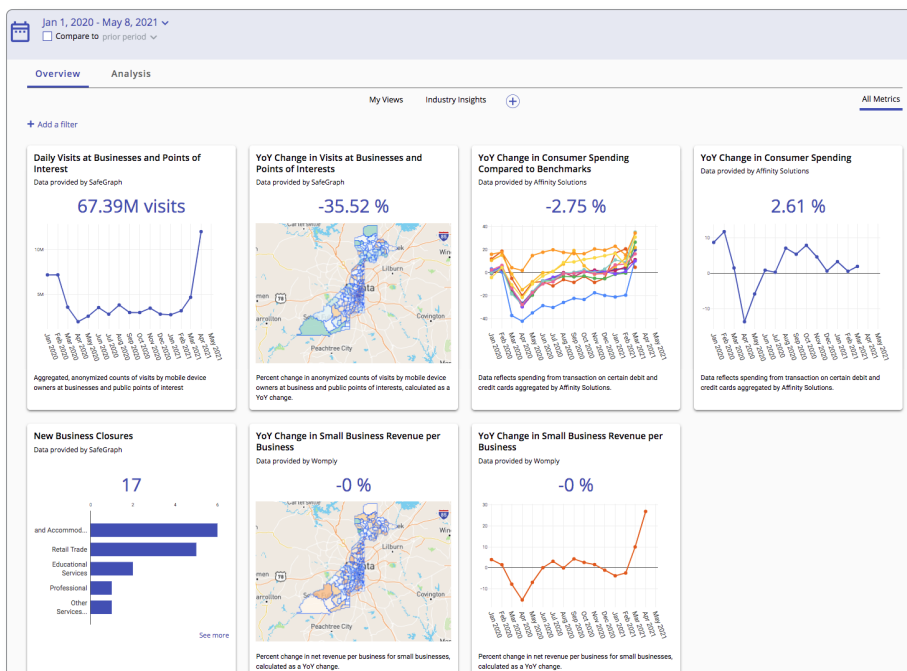
Economic Intelligence delivers leading indicator data to state and local government leaders for measuring the impact of economic programs. Packaging exclusive commercial economic data at the census-tract level in an intuitive interface allows you to derive insights on day one and monitor economic trends effecting your community. Connect with Tyler's Enterprise Data Platform to integrate your operational data with leading economic data and share insights across your enterprise.

TYLER FOR ECONOMIC AWARENESS

Empower leaders with the insights they need to get a complete picture of their community's economy.

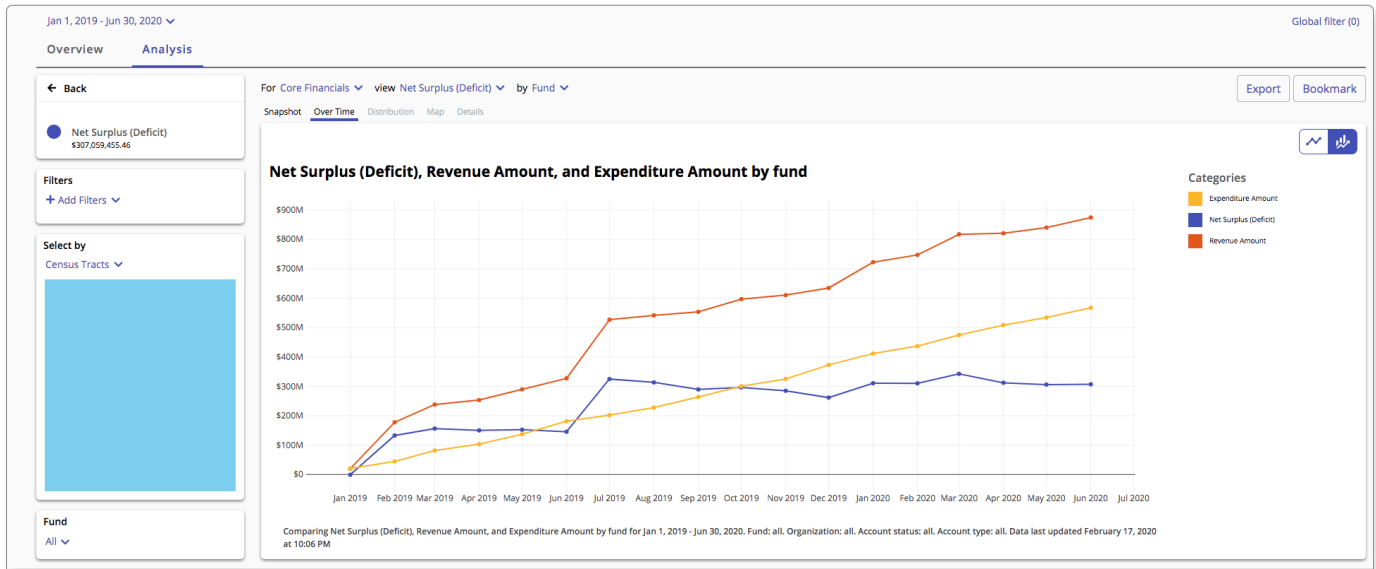
Tyler Economic Intelligence includes:

- Metrics pre-configured in an intuitive interface
- On-the-fly analysis with industry breakouts
- Maps with data aggregated by census tract
- Weekly updates
- Exportable data for flexible analysis



...continued on back

For more information visit tylertech.com



Mobility Metrics

- Are my residents returning to civic life?
- Which businesses and neighborhoods are receiving the most foot traffic?

Business Revenue Metrics

- What are the business revenue trends in my jurisdiction?
- Which neighborhoods and industries have been most affected by the pandemic?

Consumer Spending Metrics

- How has consumption changed as a result of the pandemic?
- Does my consumer demand match supply in my community?

Real Estate Market Metrics

- Which communities are experiencing surges in property values?
- Which communities are experiencing decline?

DRIVE BETTER ECONOMIC OUTCOMES FOR YOUR COMMUNITY

With granular, timely data at their fingertips, state and local government can lead strategic, equitable economic programs and can answer major policy questions, such as:

- **What is the state of the economy in my community?**
 - » Track detailed insights into community prosperity on a neighborhood by neighborhood, industry by industry basis
- **How do I direct economic interventions to maximize ROI?**
 - » Target your investments and programs to those neighborhoods and industries most in need
- **How do I identify those neighborhoods and industries most at risk of being left behind?**
 - » Pinpoint and promote equity in your economy