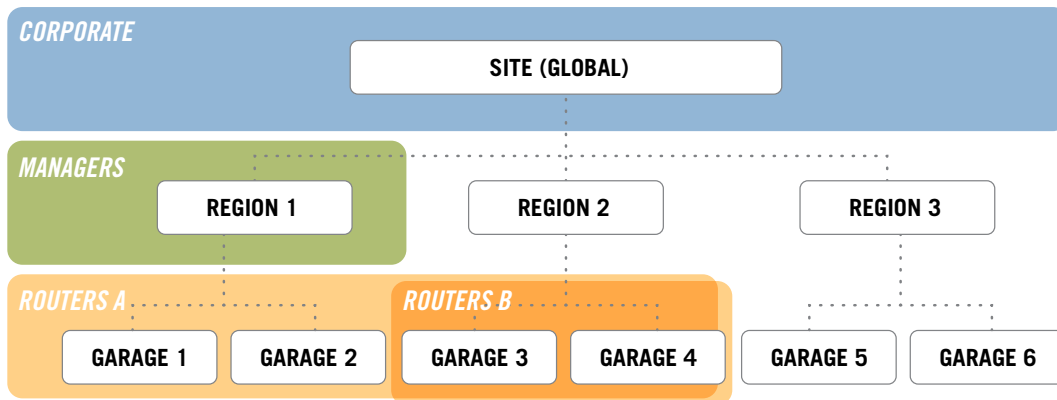


Student Transportation Multi-District Model

Historically, even the most robust routing and planning systems catered to a single school district. They were not specifically designed for distributed transportation operations, regional service providers, or contractors. With the Multi-District Model™ (MDM) functionality in Tyler’s Student Transportation management solution, all that has changed. Tyler’s MDM allows large transportation service providers to manage operations at all of their locations or regions within a single instance of the software. That means all the data for multiple operations resides in a single database structure. With MDM, Tyler’s Student Transportation solution can help you streamline your operation, share resources, and provide more service to more districts.

- **Sharing Resources** — Vehicles, employees, drivers, garages, maintenance parts, and even runs/routes can be shared by any district within your operation’s scope. Contractors in particular often need to pool their resources to meet any given day’s workload. Contractors are used to managing the difficult logistics of this process, but it’s not always easy to capture the data for reporting. With MDM, you can share resources, and track and report on all the necessary information.
- **State Entities** — Due to budget constraints, many states now provide software to their transportation departments. In such cases, MDM allows the state to easily pull the information needed from multiple districts in order to prepare for the annual claim. Note that having a state-wide MDM system can eliminate the often-cumbersome process of each district creating its annual state reports. The information can be pulled directly from the data by the state, eliminating the need for districts to do it.
- **Reporting/Viewing Information** — Large operations with multiple subsidiaries can benefit from MDM by being able to run multiple comparisons that can help each location learn how the other is handling the workload successfully. The MDM model allows for per district, per region, or contractor-level analysis.
- **Security** — Working in the public sector requires necessary transparencies, yet certain information available to users may be sensitive or confidential. Tyler’s Student Transportation solution MDM provides users with the ability to restrict access where appropriate. For example, user Bob may be restricted to District A, while user Alex can access only Districts B & C, and user Linda, as corporate manager, has access to all three districts.
- **Web-Based** — Browser-based programs such as Tyler’s Student Transportation can also bring great value to any contractor. This allows you to share information instantly with your respective districts. With unlimited user access and the ability to limit permissions, our solution allows clients to segment resources, decide who sees what, and communicate proactively.



With Multi-District Model functionality from Tyler’s Student Transportation solution, your data can be segmented for security and overlapped for efficiency.